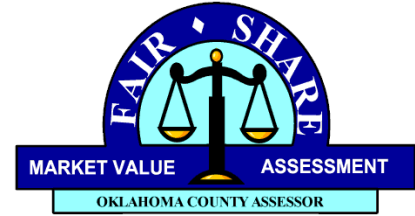


Leonard Sullivan
Oklahoma County Assessor
320 ROBERT S. KERR #313
OKLAHOMA CITY, OK 73102



WWW.OklahomaCounty.org/assessor

FOR IMMEDIATE RELEASE
October 5, 2017

FOR MORE INFORMATION CONTACT
Leonard Sullivan or Larry Stein
(405) 713-1203
(405) 361-9307 cell

Mapping Property Sales in OK County

“Real estate professionals have asked for it, and now the Oklahoma County Assessor’s Office is planning to provide maps indicating sales of properties in the 20 Townships making up the entire 720 square miles of Oklahoma County,” explained Larry Stein, chief deputy for Oklahoma County Assessor Leonard Sullivan.

“The assessor’s office has been providing special classes, called Web-Ucation classes, providing training for individuals who want to learn about the new updated mapping site on the assessor’s internationally recognized webpage. The Environmental Systems Research Institute (ESRI) has recognized the website as one of the best in the world,” Stein said.

“During the presentations to groups we get suggestions from real estate professionals or ideas on how the website can provide more information for specific reasons. One request was mapping sales of properties and this effort is to help understand the forces in the real estate markets that impact the assessed values determined by the assessor’s office,” Stein said.

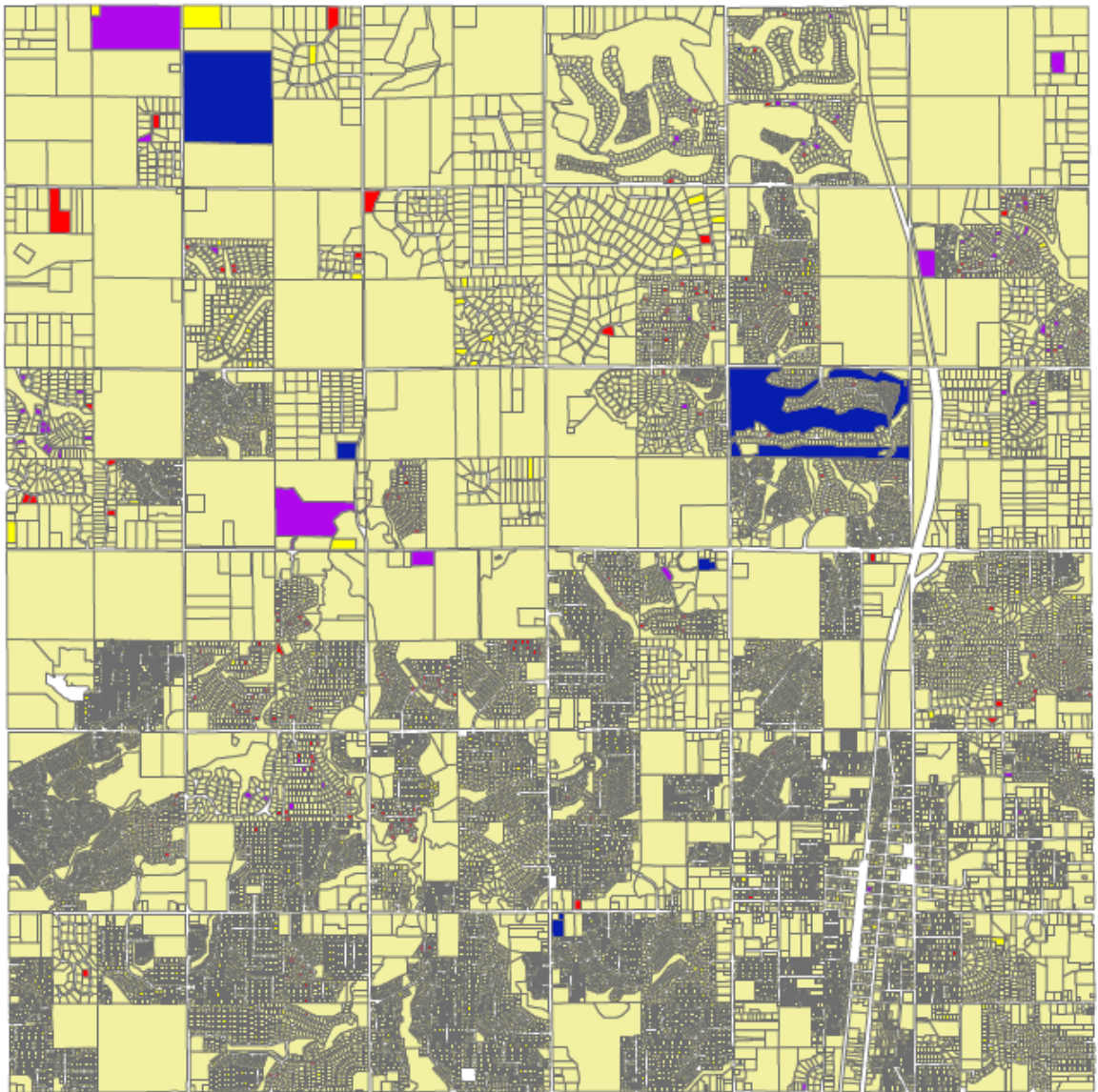
“Attached is a copy of a PDF of the Edmond Township for a reference. When these townships are completed and put on the website, the document would be interactive so you could click on any of the sales and find out all the information about the property available on the assessor’s webpage,” Stein said.

“This feature reveals parts of the data collected by the assessor to determine the assessment of value for property for ad valorem purposes in Oklahoma County. The assessor’s job is the basis for the process which creates hundreds of millions of dollars to operate our local county schools, financial support for cities and towns, city/county libraries and city/county health departments. Around 10 cents of every property tax dollar is used to support county law enforcement, operation of the county jail, secure court records, secure county records filed with the clerk, the collection of county revenue and other essential county services,” Stein said.

Property taxes in Oklahoma are among the lowest in the nation. Texas property taxes are at or more than double, depending on the location and New Jersey’s property taxes can be more than four times Oklahoma County’s for the same value of property.



Edmond Sales Data



Edmond Sales

